

Unit Plans

Legend

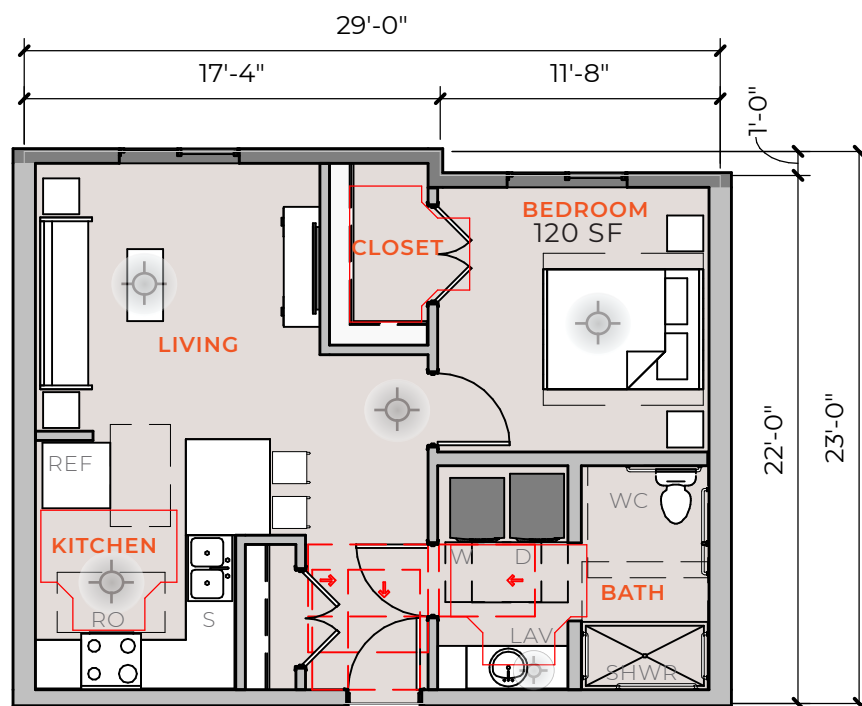
- D Front-Load Dryer - Energy Star Compliant
- L 18" Deep Linen Closet
- LAV Bathroom Sink - 1.0 gpm faucet
- MIC Countertop Microwave
- R/O Electric Range and Oven
- R&S Wire Closet Rod and Shelf (If Exposed, MDF)
- RH Range Hood (with Microwave at Type B locations)
- REF Refrigerator - Energy Star Compliant
- S Kitchen Sink
- SHVS Wire Shelves at Multiple Heights (If Exposed, MDF)
- SHWR Shower with Glass Enclosure
- W Front-Load Washer - Energy Star Compliant
- WC Toilet - 1.28 gpf fixture

General Notes

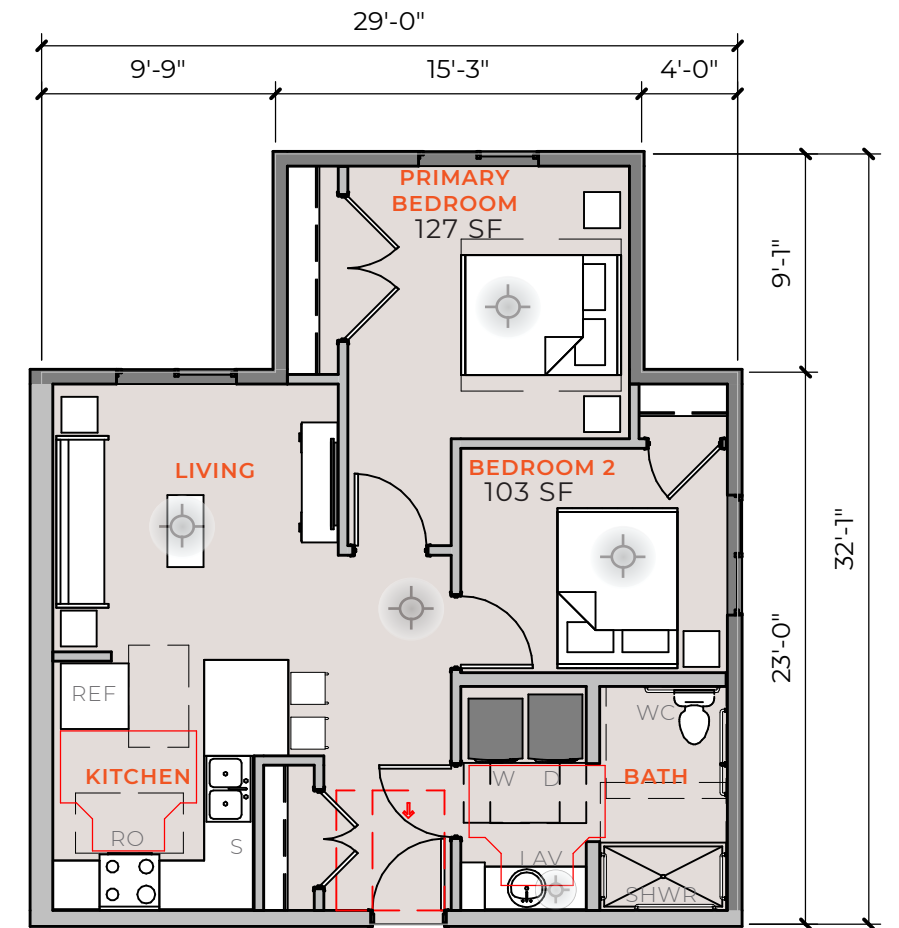
- Single lever deadbolts and eye viewers will be included on all doors to residential units.
- At least 2% of the total units will meet provisions of a "hearing impaired unit."
- Units shall achieve a HERS certification of 55 or less.
- Flow rates are as follows or better:
 - Toilets 1.28 GPF
 - Lavatory Faucets 1.0 GPM
 - Kitchen Faucets 1.2 GPM
 - Shower Heads 2.0 GPM
- Interior finishes shall be easily cleanable and durable.
- Carpet shall not be installed in high moisture areas. All carpet shall be CRI Green Label Plus and hard surface flooring shall be SCS Floorscore certified.
- Units shall be individually marked with visible contrasting identifying signage that shall be illuminated at all times.
- Every room intended for human occupancy shall include permanent, hardwired, energy efficient light fixtures.
- Interior paints and sealants shall be low volatile organic compounds (VOC) or no VOC.
- Not less than one of the units shall be fitted with a roll-in shower.
- All bathrooms shall be ventilated in accordance with building codes.
- Hot water lines will be insulated and no plumbing is located in exterior walls.
- All appliances shall be Energy Star rated with exception for cooking appliances.
- Entry closet serves as 8 sf minimum storage required by NMMFA.
- Primary bedroom is a minimum of 120 SF.
- Secondary bedroom is a minimum of 100 SF.

Unit Data

UNIT NAME	BED/BATH	# OF UNITS	TOTAL UNIT AREA (GHSF)	TOTAL BUILDING AREA - UNITS ONLY (GHSF)
UNIT TYPE 1	1/1	72	650.17 SF	46,812 SF
UNIT TYPE 2	2/1	10	800.35 SF	8,003 SF
TOTAL		82		54,815 SF



UNIT TYPE 1 - "TYPE A": ONE BEDROOM / ONE BATH
GROSS HEATED SQUARE FOOTAGE: 650.17 GHSF



UNIT TYPE 2 - "TYPE A": TWO BEDROOM / ONE BATH
GROSS HEATED SQUARE FOOTAGE: 800.35 GHSF

